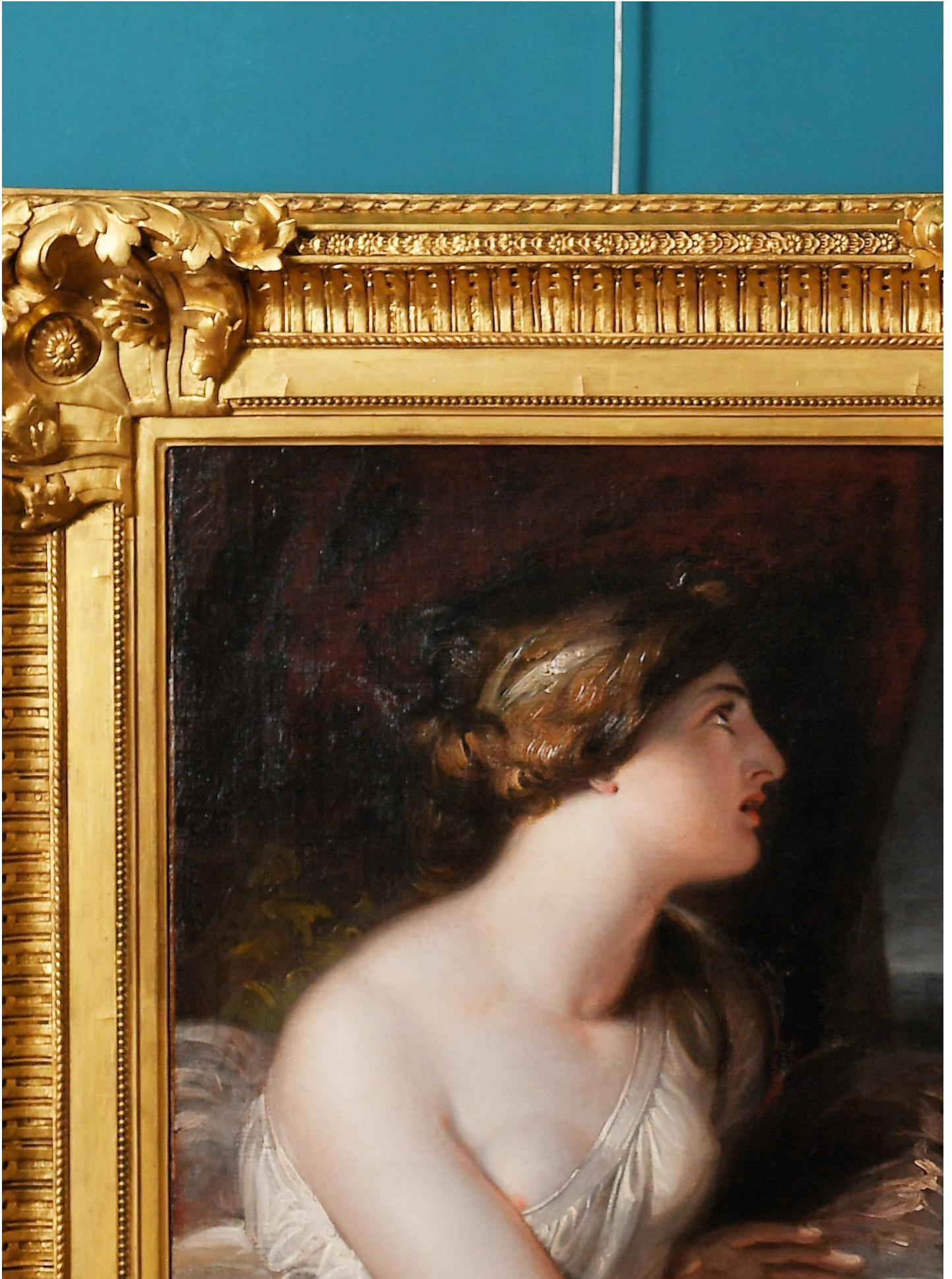
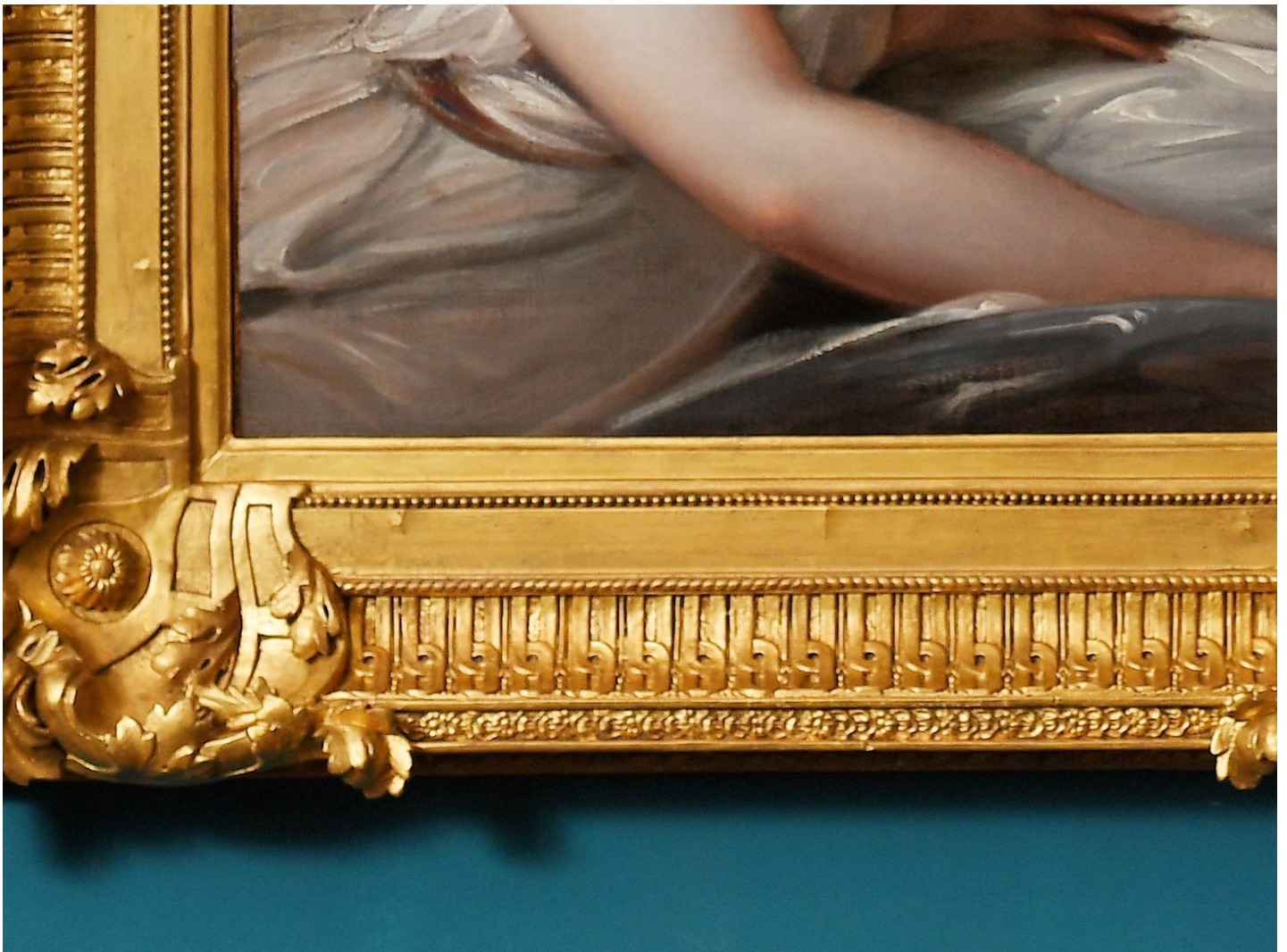


Q&A: Wick Antiques

22 May 2024

We continue our exploration of The Treasure House Fair exhibitors with Wick Antiques: the foremost antique dealer for nautical models, paintings, prints, yacht racing trophies, medals and cups - who are also commemorating the bicentenary of the Royal National Lifeboat Institution this year.





Charles Wallrock, Director of Wick Antiques with Portrait of Emma, Lady Hamilton as Ariadne by Richard Westall RA (1765–1836).
Courtesy of [Wick Antiques](#).

Why have you chosen to participate in this year's The Treasure House Fair?

It's all down to the quality of both the organisers and the dealers. The exhibitors really are on par with Masterpiece, where we exhibited for 12 years.

What are you most excited to showcase at the Fair?

We are delighted to be back at the historic Royal Hospital Chelsea in London this summer, exhibiting at The Treasure House Fair. Since the inception of Masterpiece in 2009, Wick Antiques has been honoured to regularly exhibit historically significant and interesting works of art in this iconic location. This year we will continue our summer tradition showcasing models and medals, paintings and prints to celebrate the bicentenary of the Royal National Lifeboat Institution, alongside other important nautical pieces.

What advice would you give to first-time visitors of the Fair?

You must absolutely allow yourself time to enjoy everything that's on offer!



'Clipper Ship South Australian in Heavy Seas' by Henry Scott (1911-2005). 61cm x 92cm.

